

UNIT FIVE

School Days

Introduction



What will we learn about in this unit?

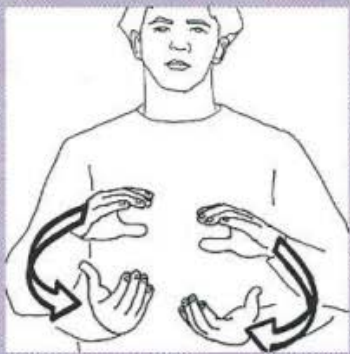
Unit Five Objectives

- To improve conversational skills
- To sign about school and school life
- To identify and use the Agent Marker appropriately
- To understand contemporary Deaf education options
- To understand and use these classifiers: \wedge , 1, 3...and review others
- To tell time and sign about time-related issues

Let's start with some conversational vocabulary:

Vocabulary

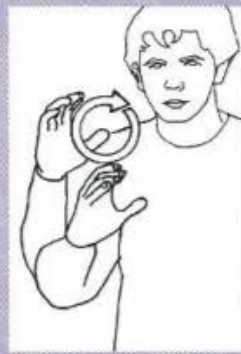
Conversation



Class



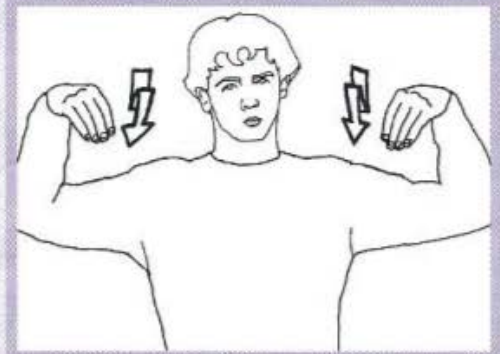
Locker



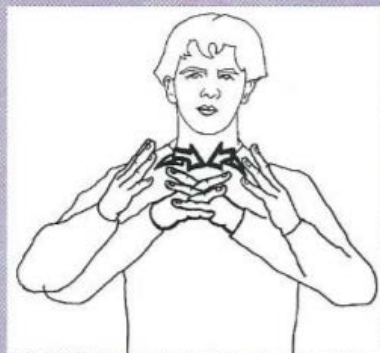
To look for



Room, box



Store



Football (Unit 6)



Vice-president

Places Around Campus



Pointing to people is a basic feature of American Sign Language. Just as a signer points to a person who may or may not be present, signers can point to a location whether it is seen or not. If the location is visible, simply point directly towards the area. Modify the point to reflect the actual path someone would take to arrive at the location. Depending on how the point is made, you can sign directions like *over there*, *around the corner*, or *that way*. Look at the way pointing is used in the *Places Around Campus* dialogue shown here.

Dialogue Translation

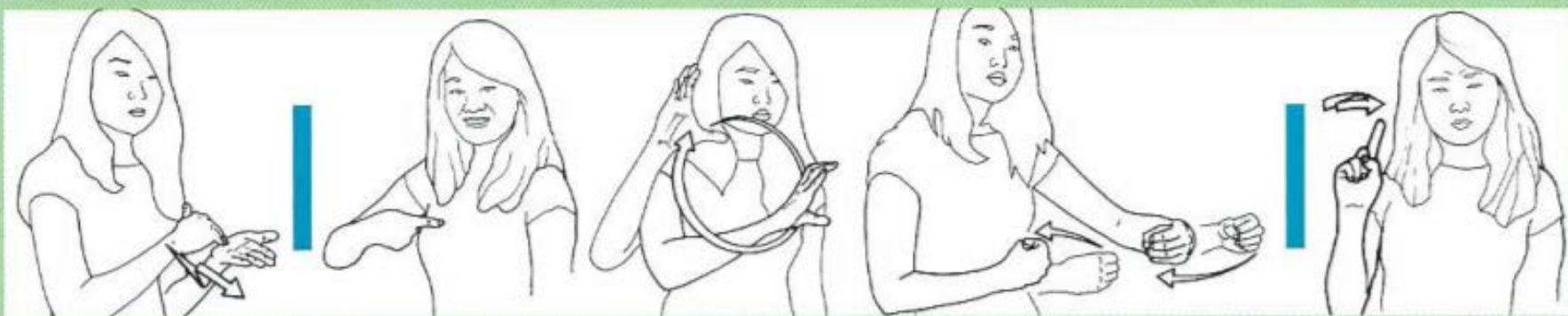
Marc: *Excuse me, where is the gym?*

Kelly: *It's right around there, near the theater.*

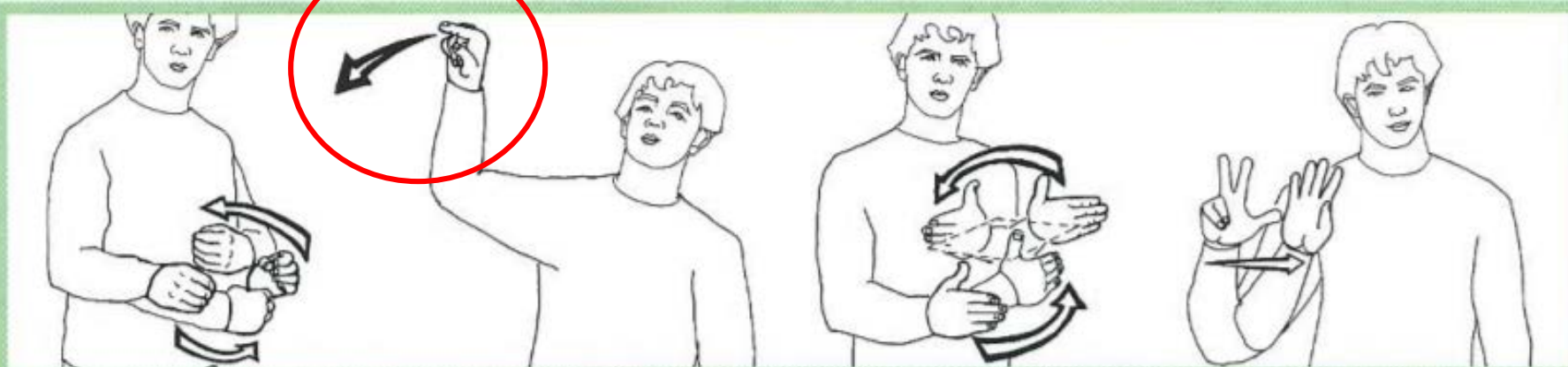
Marc: *Oh, okay. Thank you!*

Kelly: *You're welcome.*

For example:



Excuse me. I'm looking for the office. Where is it?



The office is that way, in Room 34.

Some more examples:



The bathroom is around there, near the pool.



The office is near the theatre.



No, it's around the corner

A little more vocabulary:

Vocabulary

School Locations

Fingerspell these words: **Lab / laboratory, Pool**



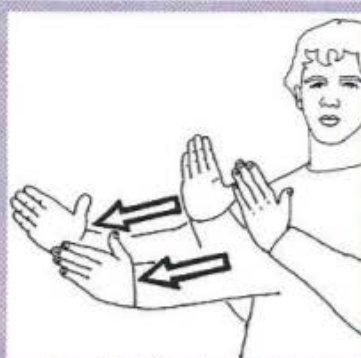
Area (location)



Cafeteria



Gymnasium



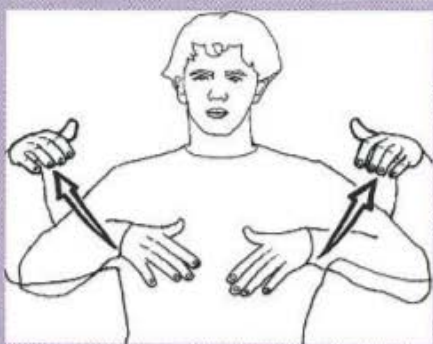
Hallway



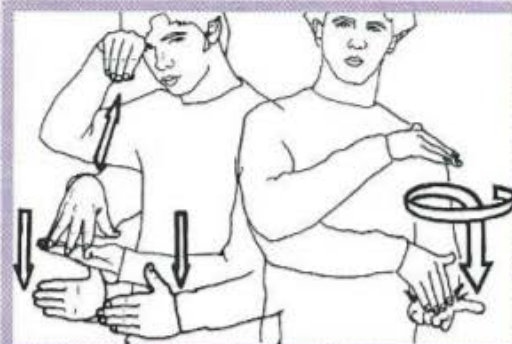
Library



Office



Stadium, auditorium



Student center



Technology center



Theater